

Q4

Volusia County
Economic Development
4th Quarter 2025 Update:
February 2026

Your Volusia County Council



Jeff Brower
County Chair
Volusia County Council



Jake Johansson
At-Large
Representative



Matt Reinhart
Vice Chair, District 2
Representative



Don Dempsey
District 1
Representative



Danny Robins
District 3
Representative



Troy Kent
District 4
Representative



David Santiago
District 5
Representative

The Volusia County Council is pleased to present the most recent economic indicators that impact our county. We trust this information will be of value to you in your day-to-day business planning.

Economic Development is a “team sport” in Volusia County. It is essential that public and private sectors work arm-in-arm as we seek to promote economic prosperity in our community.

Since the first quarter of 2008, Volusia County’s Economic Development Division has hosted an economic update breakfast that we call our “Q” meetings.

As we all work together to achieve our economic

objectives, it’s essential that we understand the economic indicators that influence our decisions.

The purpose of the “Q” meetings is to share this information with business leaders and decision-makers to enhance awareness of important economic facts.

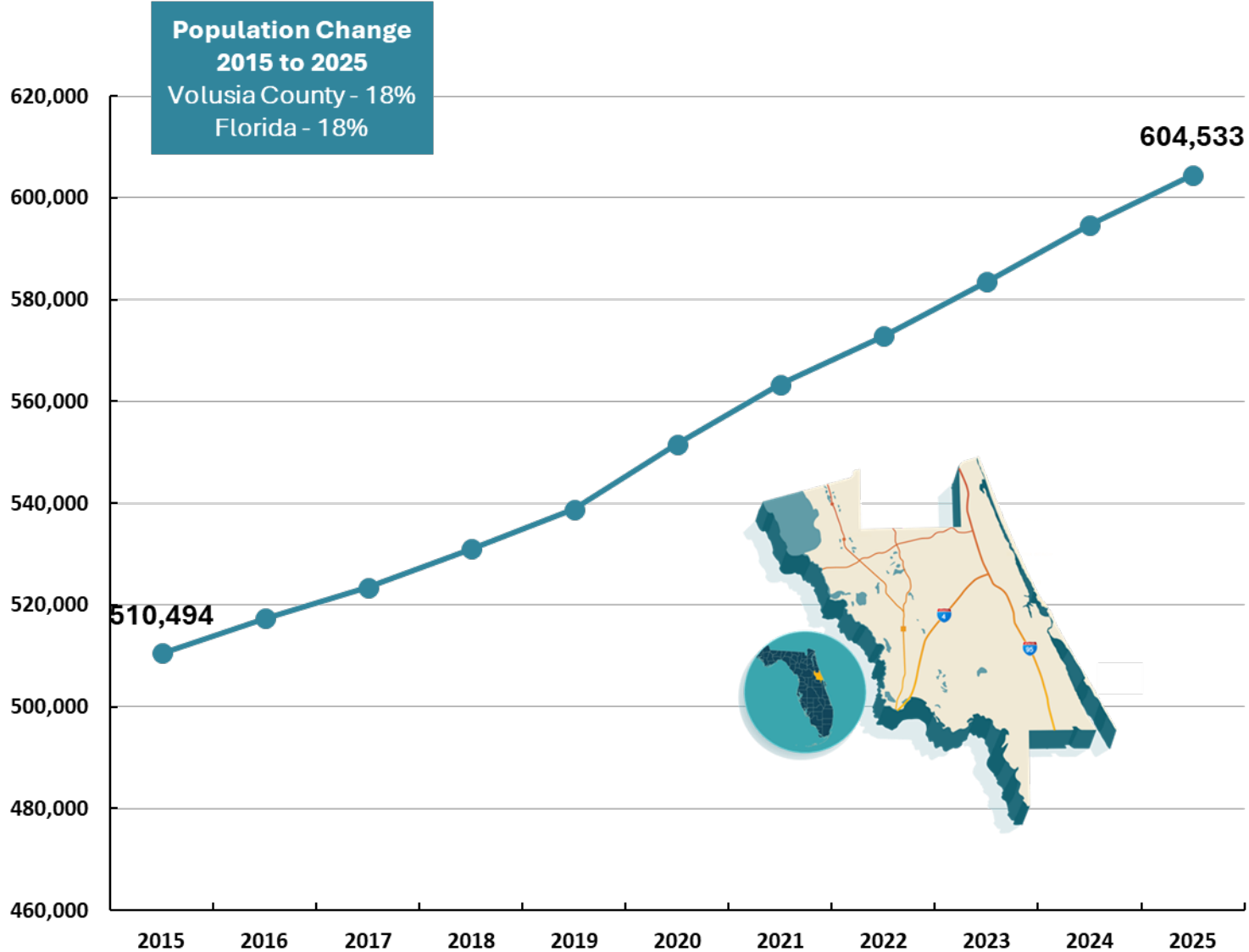
The “Q” meetings are also an opportunity to network, share ideas, and build relationships.

The Economic Development Division has other economic data that is available to you. Please do not hesitate to seek our assistance.

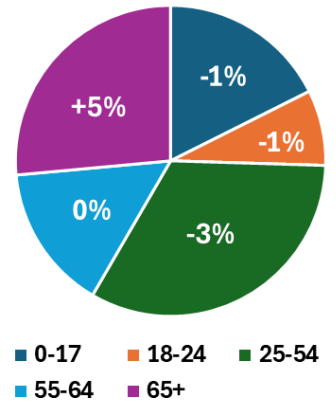
We welcome your input and participation in these “Q” meetings.



Volusia County Population Trend 2015-2025

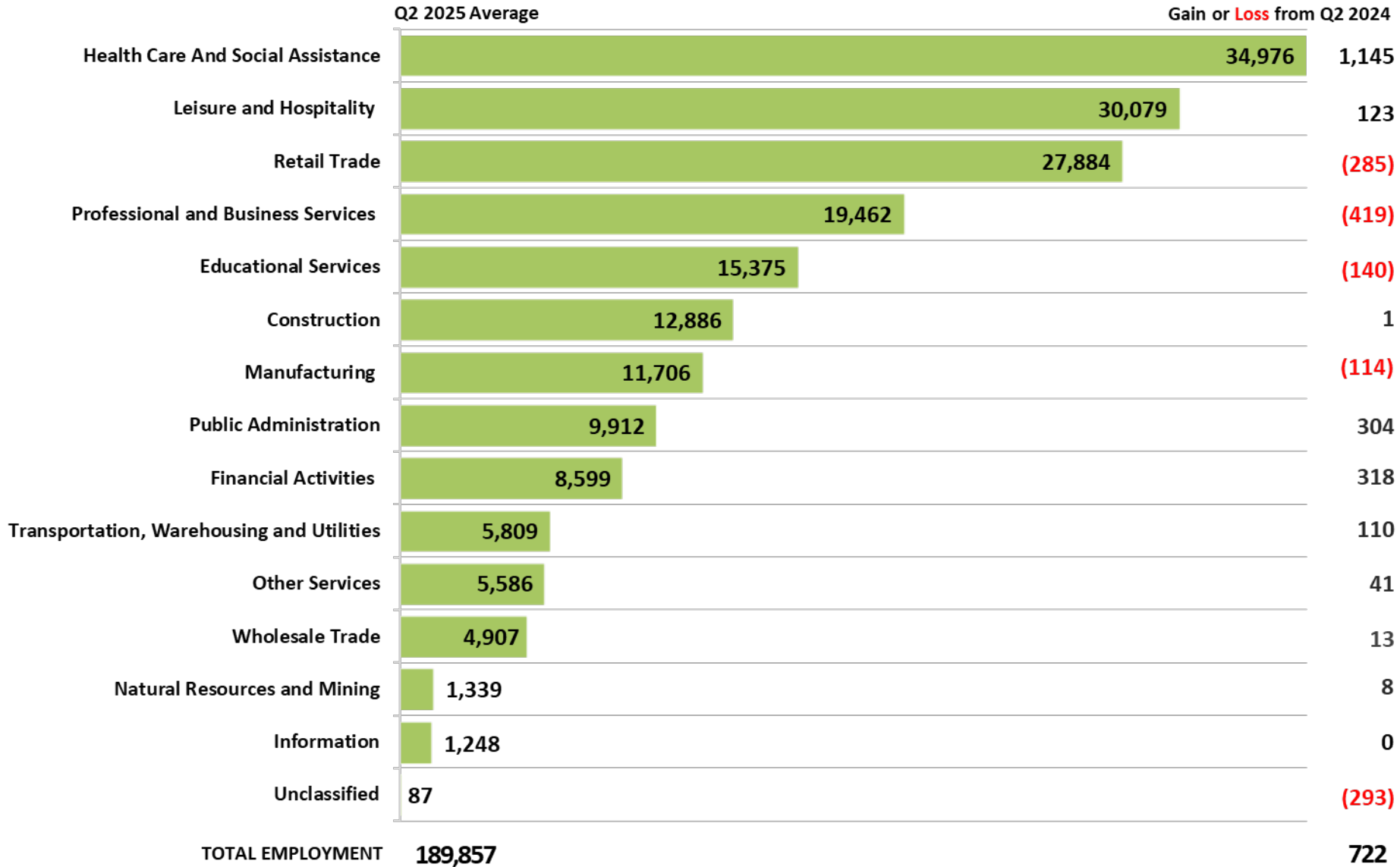


Population by Age (10 year % change)



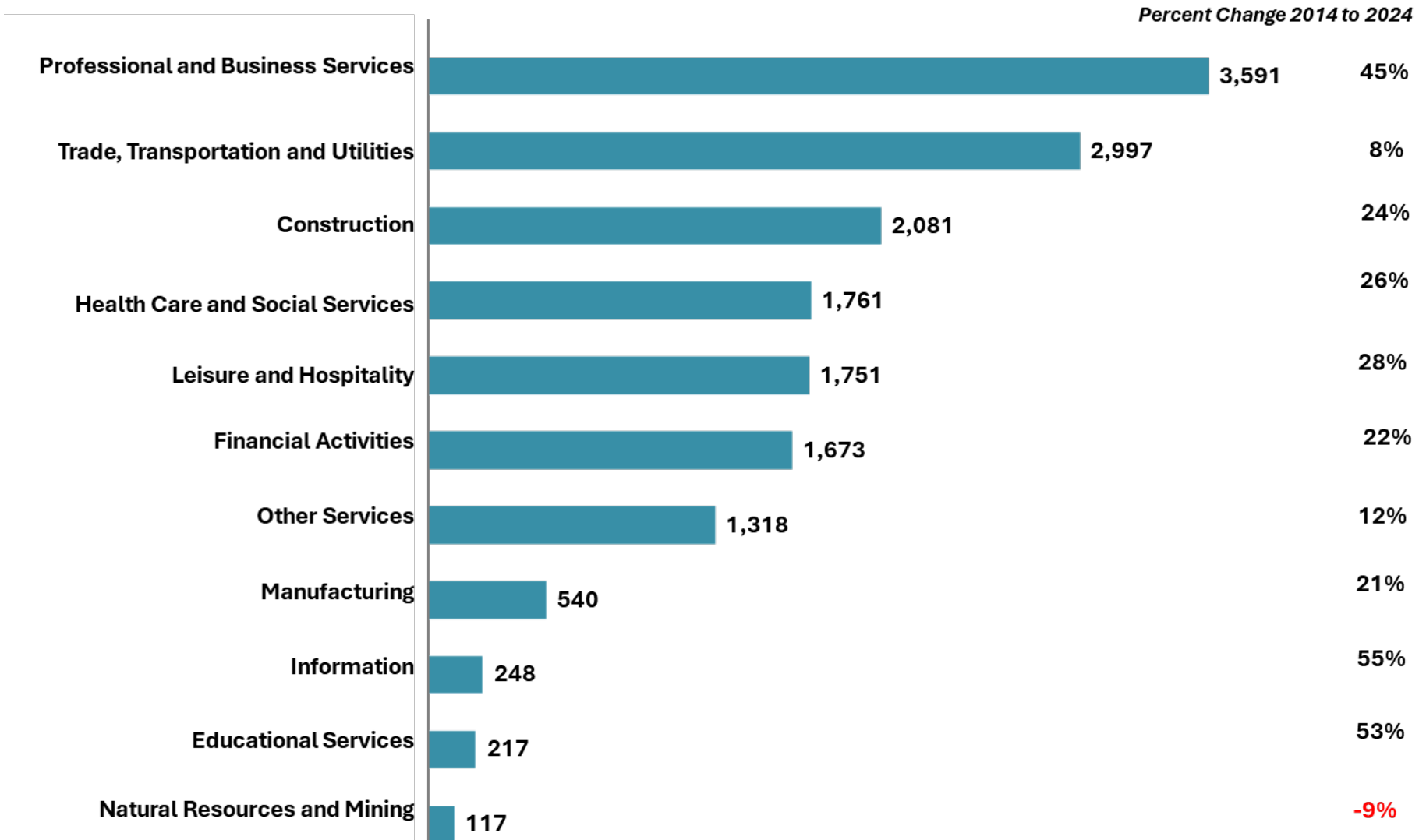
Workforce Population
56%

Volusia County Employment by Major Industry

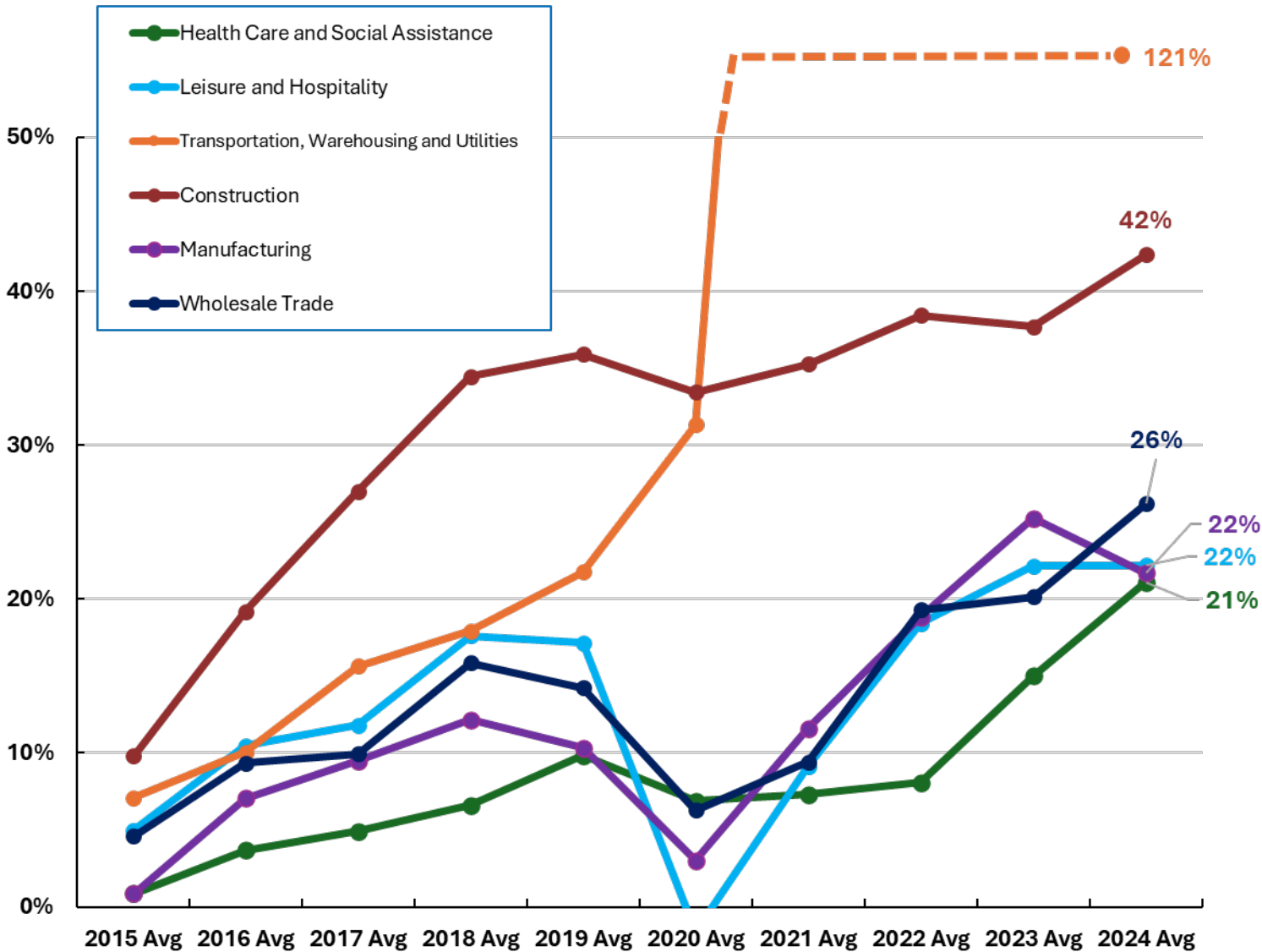


Source: Florida Commerce, Volusia County Quarterly Census of Employment and Wages. Most current quarterly preliminary release.

Volusia County Total Private Employer Establishments 2014-2024



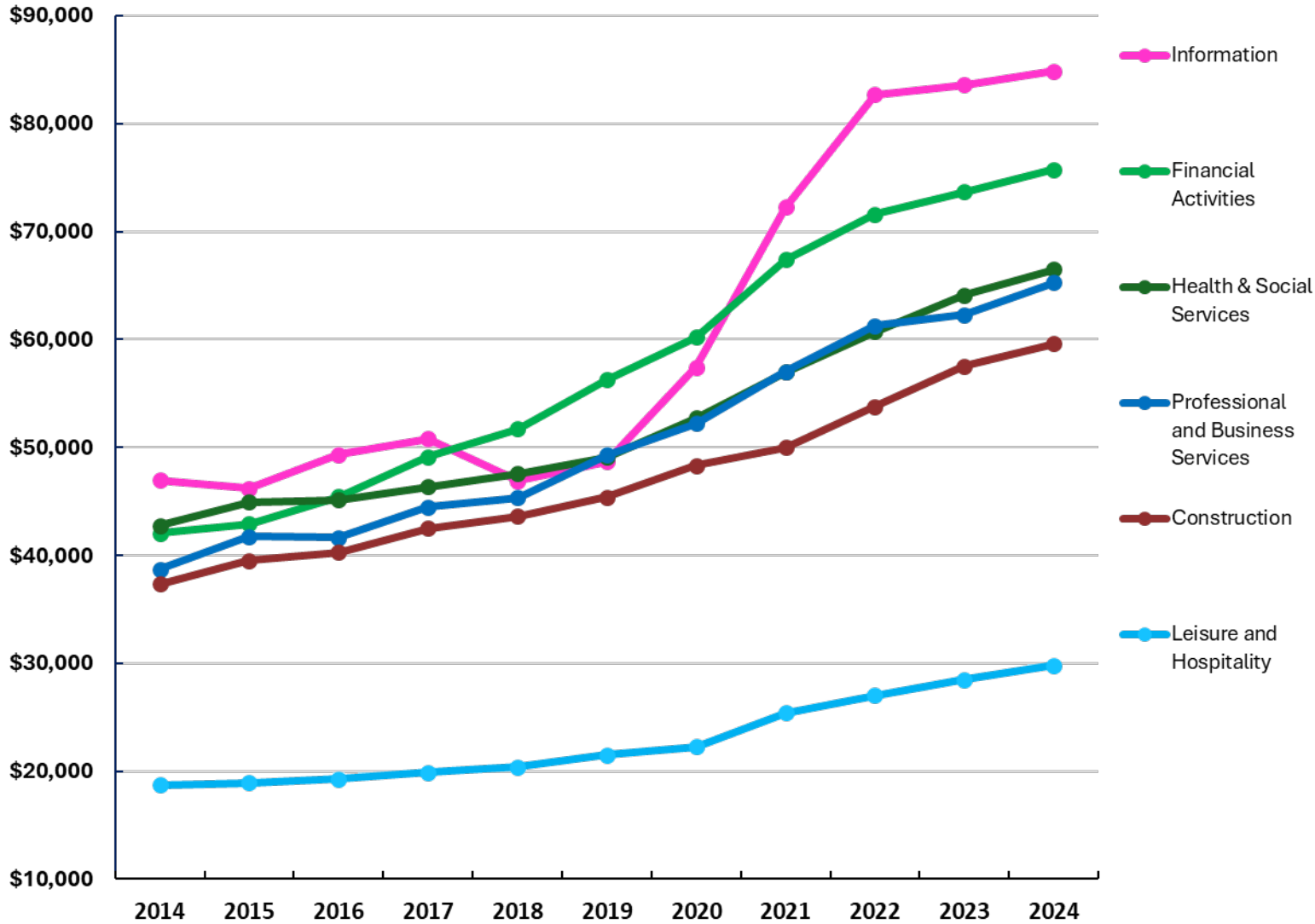
Volusia County Average Annual Employment – Top 6 Industries 10-Year Growth



| Top 6 Industries | Change 2014 to 2024 |
|-------------------------------------------|---------------------|
| Health Care and Social Assistance | 5,927 |
| Leisure and Hospitality | 5,362 |
| Construction | 3,859 |
| Transportation, Warehousing and Utilities | 3,210 |
| Manufacturing | 2,091 |
| Wholesale Trade | 1,006 |

Source: FloridaCommerce, Quarterly Census of Employment and Wage - private industries. December 2025 release

Volusia County Average Annual Wage – Top 6 Industries Trend 2014-2024



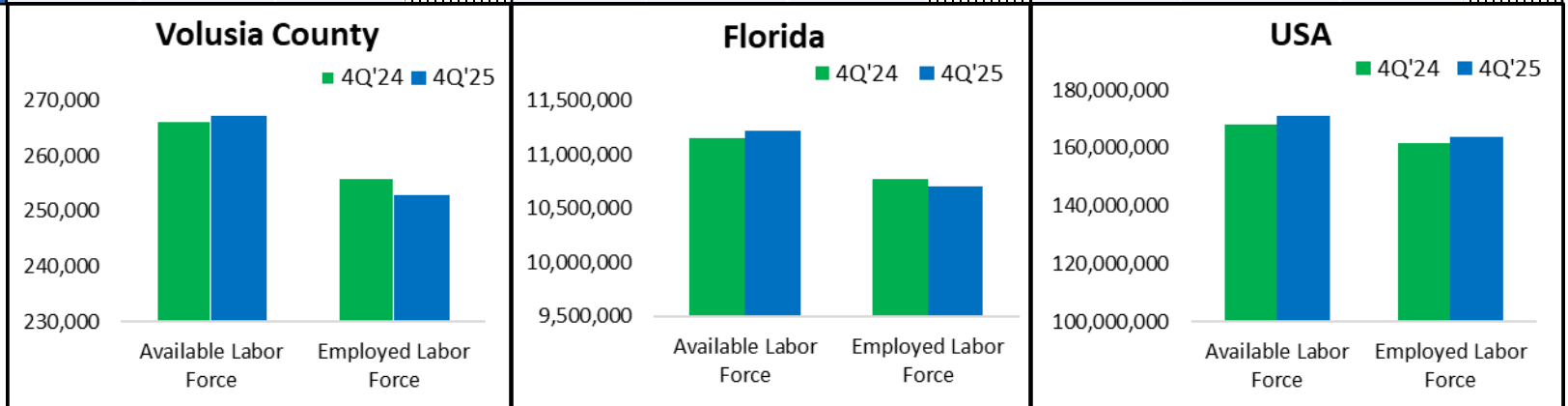
| Top 6 Industries | Wage % Change 2014 to 2024 |
|----------------------------------|----------------------------|
| Information | 81% |
| Financial Activities | 80% |
| Professional & Business Services | 69% |
| Construction | 60% |
| Leisure and Hospitality | 59% |
| Health & Social Services | 55% |

Source: FloridaCommerce, Quarterly Census of Employment and Wage - private industries. December 2025 release

Volusia County, Florida & U.S.A. Quarterly Labor Statistics



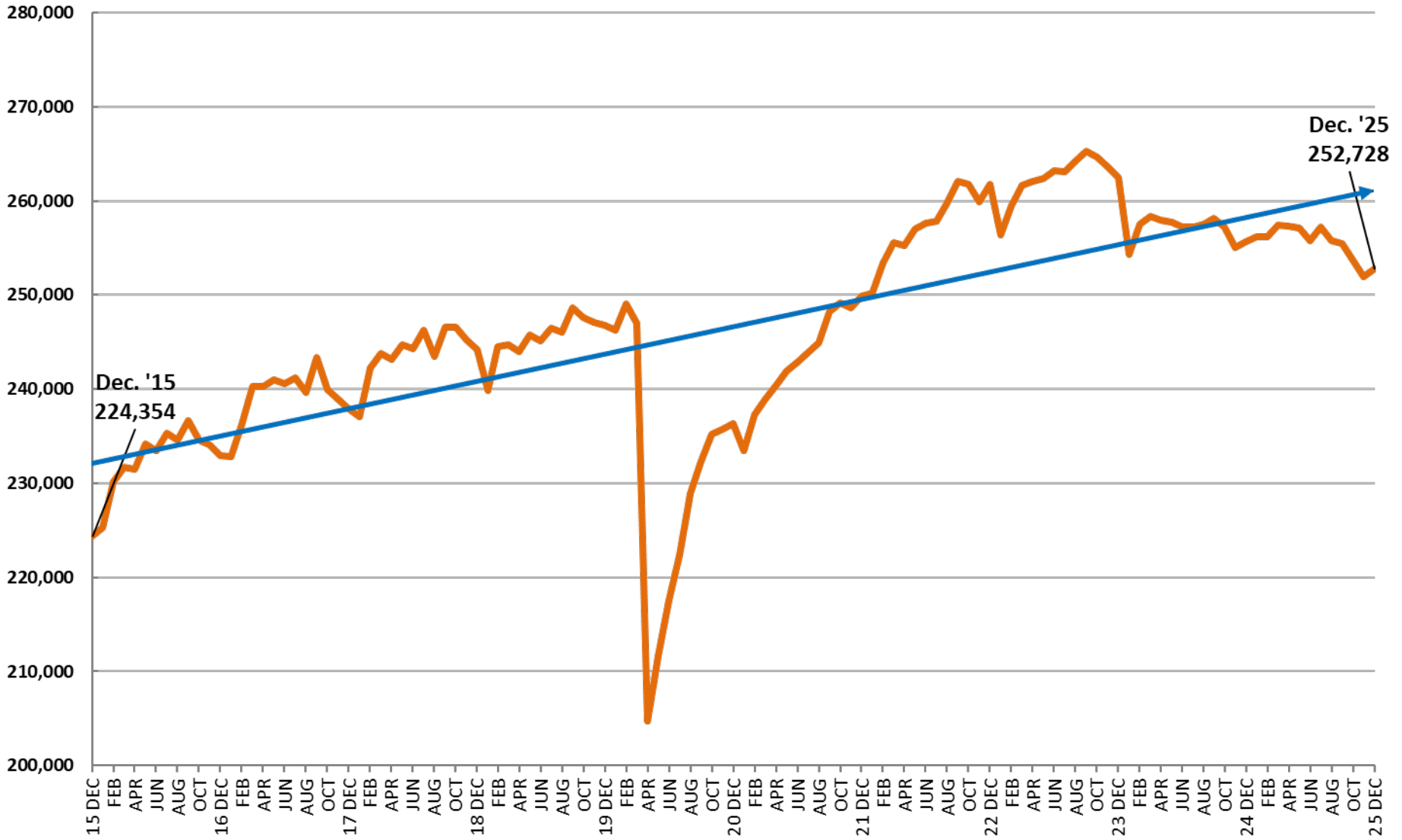
| | Volusia County | | | | Florida | | | | USA | | | |
|------------------------|----------------|---------|------------|----------|------------|------------|------------|----------|-------------|-------------|------------|----------|
| Labor Statistics | 4Q'24 | 4Q'25 | Net Change | % Change | 4Q'24 | 4Q'25 | Net Change | % Change | 4Q'24 | 4Q'25 | Net Change | % Change |
| Available Labor Force | 266,358 | 267,278 | 920 | 0.3% | 11,147,333 | 11,217,833 | 70,500 | 0.6% | 168,159,667 | 171,177,333 | 3,017,667 | 1.8% |
| Employed Labor Force | 255,991 | 252,771 | -3,219 | -1.3% | 10,771,000 | 10,697,000 | -74,000 | -0.7% | 161,562,667 | 163,922,000 | 2,359,333 | 1.4% |
| Unemployed Labor Force | 10,367 | 14,507 | 4,140 | 28.5% | 376,333 | 521,333 | 145,000 | 27.8% | 6,597,000 | 7,255,500 | 658,500 | 9.1% |
| Unemployment Rate | 3.9% | 5.4% | 1.5% | | 3.4% | 4.6% | 1.3% | | 3.9% | 4.2% | 0.3% | |



Note: Oct. 2025 labor data was canceled due to the Federal Government Shutdown. Figures for October were generated based on the average of Sept & November figures.

Source: Florida Commerce, Local Area Unemployment Statistics (LAUS) program

Volusia County Employment Trend 2014-2025



Note: Oct. 2025 labor data was canceled due to the Federal Government Shutdown. Figures for October were generated based on the average of Sept & November figures.

Source: Florida Commerce, Local Area Unemployment Statistics (LAUS) program

Municipal Employment Quarterly Y-o-Y

| Daytona Beach | | | | | Deland | | | | | Deltona | | | | |
|----------------|--------|--------|--------|---------------|----------------|--------|--------|--------|---------------|----------------|--------|--------|--------|---------------|
| <u>4Q 2025</u> | OCT | NOV | DEC | Avg. | <u>4Q 2025</u> | OCT | NOV | DEC | Avg. | <u>4Q 2025</u> | OCT | NOV | DEC | Avg. |
| Labor Force | 36,649 | 36,613 | 36,525 | 36,596 | Labor Force | 17,975 | 17,945 | 17,874 | 17,931 | Labor Force | 48,496 | 48,384 | 48,312 | 48,397 |
| Employment | 34,303 | 34,067 | 34,176 | 34,182 | Employment | 16,886 | 16,770 | 16,824 | 16,827 | Employment | 46,004 | 45,687 | 45,833 | 45,841 |
| Unemployed | 2,346 | 2,546 | 2,349 | 2,414 | Unemployed | 1,089 | 1,175 | 1,050 | 1,105 | Unemployed | 2,492 | 2,697 | 2,479 | 2,556 |
| % Unemployed | 6.4% | 7.0% | 6.4% | 6.6% | % Unemployed | 6.1% | 6.5% | 5.9% | 6.2% | % Unemployed | 5.2% | 5.6% | 5.1% | 5.3% |
| <u>4Q 2024</u> | OCT | NOV | DEC | Avg. | <u>4Q 2024</u> | OCT | NOV | DEC | Avg. | <u>4Q 2024</u> | OCT | NOV | DEC | Avg. |
| Labor Force | 33,264 | 33,044 | 32,868 | 33,059 | Labor Force | 16,047 | 15,950 | 15,927 | 15,975 | Labor Force | 47,150 | 46,853 | 46,818 | 46,940 |
| Employment | 31,602 | 31,313 | 31,442 | 31,452 | Employment | 15,355 | 15,215 | 15,277 | 15,282 | Employment | 45,283 | 44,869 | 45,054 | 45,069 |
| Unemployed | 1,662 | 1,731 | 1,426 | 1,606 | Unemployed | 692 | 735 | 650 | 692 | Unemployed | 1,867 | 1,984 | 1,764 | 1,872 |
| % Unemployed | 5.0% | 5.2% | 4.3% | 4.8% | % Unemployed | 4.3% | 4.6% | 4.1% | 4.3% | % Unemployed | 4.0% | 4.2% | 3.8% | 4.0% |

Note: Oct. 2025 labor data was canceled due to the Federal Government Shutdown. Figures for October were generated based on the average of Sept & November figures.

Source: Florida Commerce, Local Area Unemployment Statistics (LAUS) program

Municipal Employment Quarterly Y-o-Y

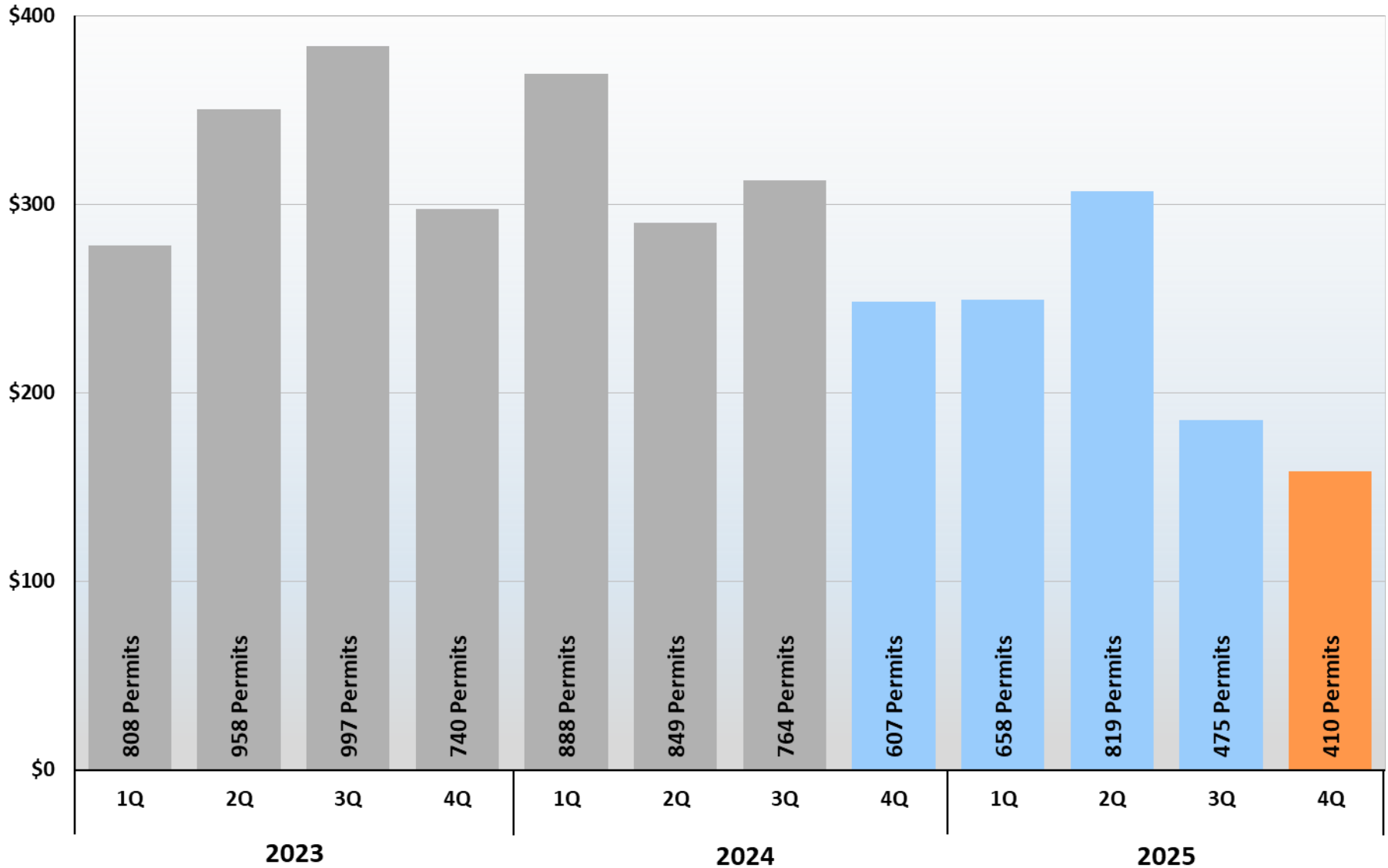
| New Smyrna Beach | | | | | Ormond Beach | | | | | Port Orange | | | | |
|------------------|--------|--------|--------|--------|----------------|--------|--------|--------|--------|----------------|--------|--------|--------|--------|
| <u>4Q 2025</u> | OCT | NOV | DEC | Avg. | <u>4Q 2025</u> | OCT | NOV | DEC | Avg. | <u>4Q 2025</u> | OCT | NOV | DEC | Avg. |
| Labor Force | 14,043 | 13,987 | 13,951 | 13,994 | Labor Force | 20,017 | 19,977 | 19,916 | 19,970 | Labor Force | 30,896 | 30,816 | 30,739 | 30,817 |
| Employment | 13,316 | 13,224 | 13,266 | 13,269 | Employment | 18,985 | 18,854 | 18,915 | 18,918 | Employment | 29,409 | 29,206 | 29,300 | 29,305 |
| Unemployed | 728 | 763 | 685 | 725 | Unemployed | 1,033 | 1,123 | 1,001 | 1,052 | Unemployed | 1,488 | 1,610 | 1,439 | 1,512 |
| % Unemployed | 5.2% | 5.5% | 4.9% | 5.2% | % Unemployed | 5.2% | 5.6% | 5.0% | 5.3% | % Unemployed | 4.8% | 5.2% | 4.7% | 4.9% |
| <u>4Q 2024</u> | OCT | NOV | DEC | Avg. | <u>4Q 2024</u> | OCT | NOV | DEC | Avg. | <u>4Q 2024</u> | OCT | NOV | DEC | Avg. |
| Labor Force | 13,031 | 12,899 | 12,873 | 12,934 | Labor Force | 20,982 | 20,810 | 20,770 | 20,854 | Labor Force | 33,692 | 33,441 | 33,375 | 33,503 |
| Employment | 12,530 | 12,416 | 12,467 | 12,471 | Employment | 20,195 | 20,010 | 20,093 | 20,099 | Employment | 32,560 | 32,262 | 32,395 | 32,406 |
| Unemployed | 501 | 483 | 406 | 463 | Unemployed | 787 | 800 | 677 | 755 | Unemployed | 1,132 | 1,179 | 980 | 1,097 |
| % Unemployed | 3.8% | 3.7% | 3.2% | 3.6% | % Unemployed | 3.8% | 3.8% | 3.3% | 3.6% | % Unemployed | 3.4% | 3.5% | 2.9% | 3.3% |

Note: Oct. 2025 labor data was canceled due to the Federal Government Shutdown. Figures for October were generated based on the average of Sept & November figures.

Source: Florida Commerce, Local Area Unemployment Statistics (LAUS) program

Volusia County Residential New Construction Building Permits

Permit Value (millions)



Source: City and County permit offices reporting new construction activity.

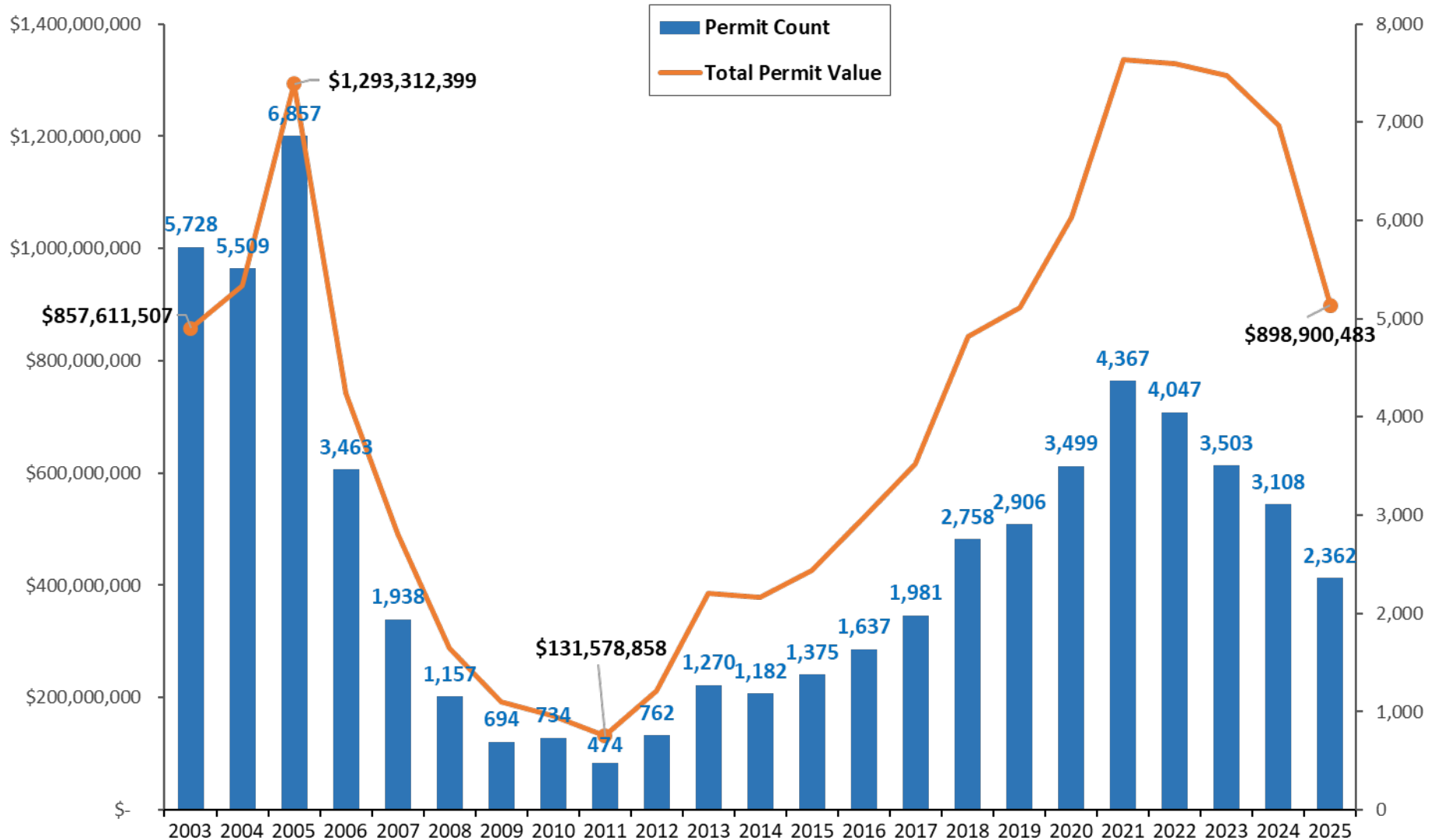
Volusia County Residential New Construction Building Permits



| MUNICIPALITIES | 4Q 2024 Permits | 4Q 2024 \$ Value | 1Q 2025 Permits | 1Q 2025 \$ Value | 2Q 2025 Permits | 2Q 2025 \$ Value | 3Q 2025 Permits | 3Q 2025 \$ Value | 4Q 2025 Permits | 4Q 2025 \$ Value |
|---------------------------|-----------------|----------------------|-----------------|----------------------|-----------------|----------------------|-----------------|----------------------|-----------------|----------------------|
| Daytona Beach | 142 | \$55,559,996 | 166 | \$48,229,434 | 281 | \$88,778,562 | 46 | \$18,954,432 | 39 | \$17,811,322 |
| Daytona Beach Shores | 0 | \$0 | 0 | \$0 | 0 | \$0 | 0 | \$0 | 0 | \$0 |
| DeBary | 134 | \$62,091,449 | 72 | \$30,673,109 | 47 | \$18,325,054 | 68 | \$24,956,462 | 46 | \$17,233,431 |
| DeLand | 83 | \$30,806,635 | 85 | \$33,938,195 | 98 | \$40,238,858 | 72 | \$32,616,922 | 25 | \$10,311,758 |
| Deltona | 24 | \$10,639,053 | 22 | \$8,766,309 | 24 | \$9,589,642 | 28 | \$11,215,675 | 27 | \$9,991,773 |
| Edgewater | 42 | \$18,052,946 | 53 | \$22,563,733 | 70 | \$27,303,740 | 14 | \$6,380,736 | 36 | \$13,580,695 |
| Holly Hill | 10 | \$1,735,610 | 7 | \$957,170 | 6 | \$672,360 | 16 | \$1,792,960 | 15 | \$1,860,720 |
| Lake Helen | 3 | \$1,063,859 | 4 | \$2,268,132 | 0 | \$0 | 5 | \$1,926,891 | 1 | \$391,011 |
| New Smyrna Beach | 31 | \$12,211,349 | 68 | \$21,182,109 | 80 | \$28,331,307 | 33 | \$10,910,556 | 40 | \$12,464,915 |
| Oak Hill | 0 | \$0 | 1 | \$350,000 | 7 | \$2,205,950 | 2 | \$551,040 | 0 | \$0 |
| Orange City | 4 | \$609,576 | 7 | \$2,264,328 | 27 | \$7,946,081 | 14 | \$3,093,425 | 6 | \$1,281,533 |
| Ormond Beach | 47 | \$20,188,383 | 86 | \$39,399,016 | 84 | \$37,031,964 | 60 | \$23,182,879 | 62 | \$25,365,399 |
| Pierson | 1 | \$190,000 | 2 | \$1,200,000 | 1 | \$175,000 | 0 | \$0 | 0 | \$0 |
| Ponce Inlet | 1 | \$880,000 | 0 | \$0 | 1 | \$778,000 | 4 | \$3,928,891 | 1 | \$1,100,000 |
| Port Orange | 9 | \$4,187,427 | 13 | \$7,401,593 | 28 | \$15,043,900 | 12 | \$6,357,688 | 7 | \$4,457,880 |
| South Daytona | 0 | \$0 | 6 | \$539,901 | 8 | \$825,365 | 8 | \$700,000 | 0 | \$0 |
| Unincorporated | 76 | \$29,696,378 | 66 | \$29,217,835 | 57 | \$29,280,451 | 93 | \$38,589,880 | 105 | \$42,414,511 |
| Totals for Quarter | 607 | \$247,912,661 | 658 | \$248,950,864 | 819 | \$306,526,234 | 475 | \$185,158,437 | 410 | \$158,264,948 |

Source: City and County permit offices reporting new construction activity.

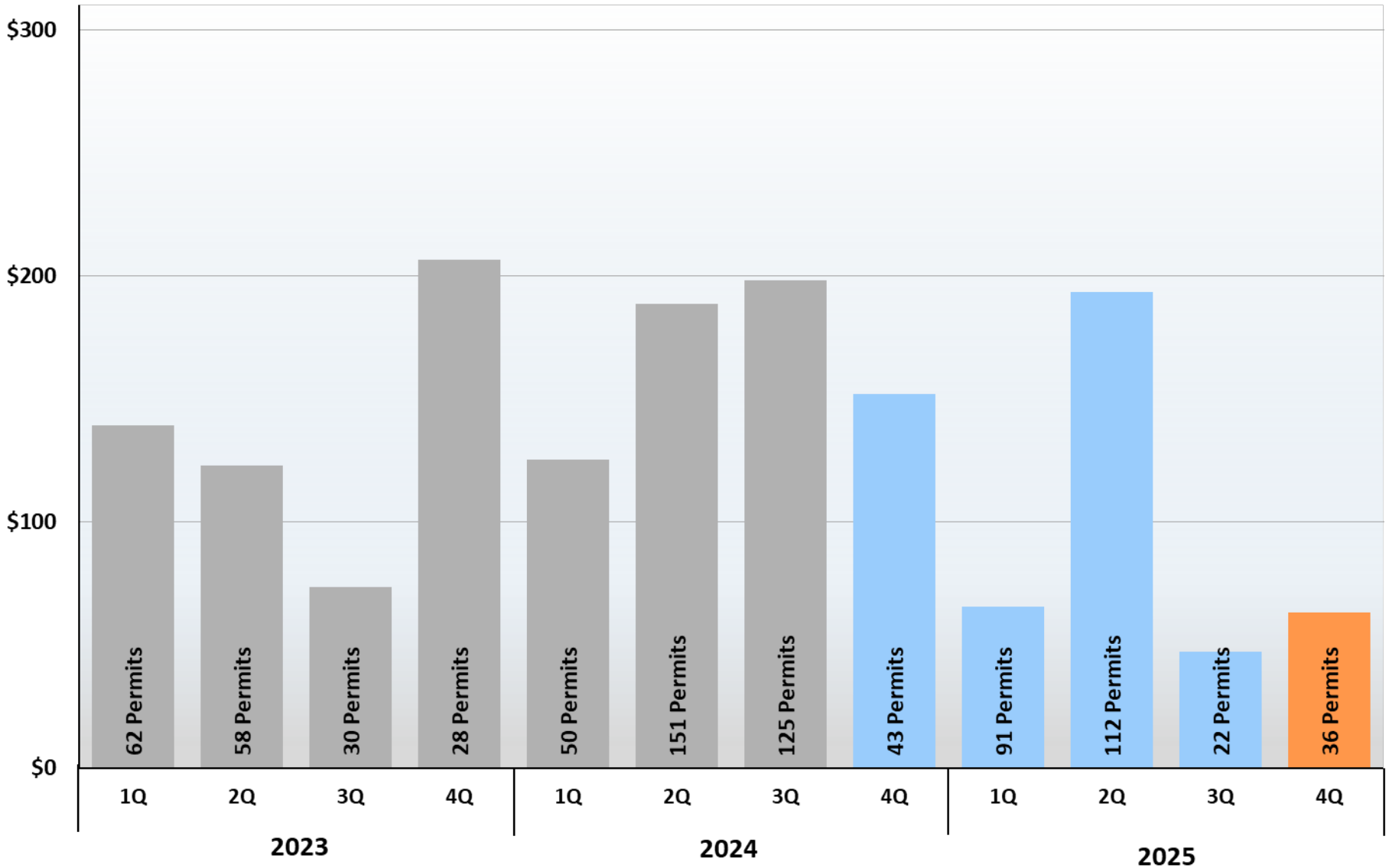
Volusia County New Residential Construction Permits Trend



Source: City and County permit offices reporting new construction activity.

Volusia County Commercial New Construction Building Permits

Permit Value (millions)



Source: City and County permit offices reporting new construction activity.

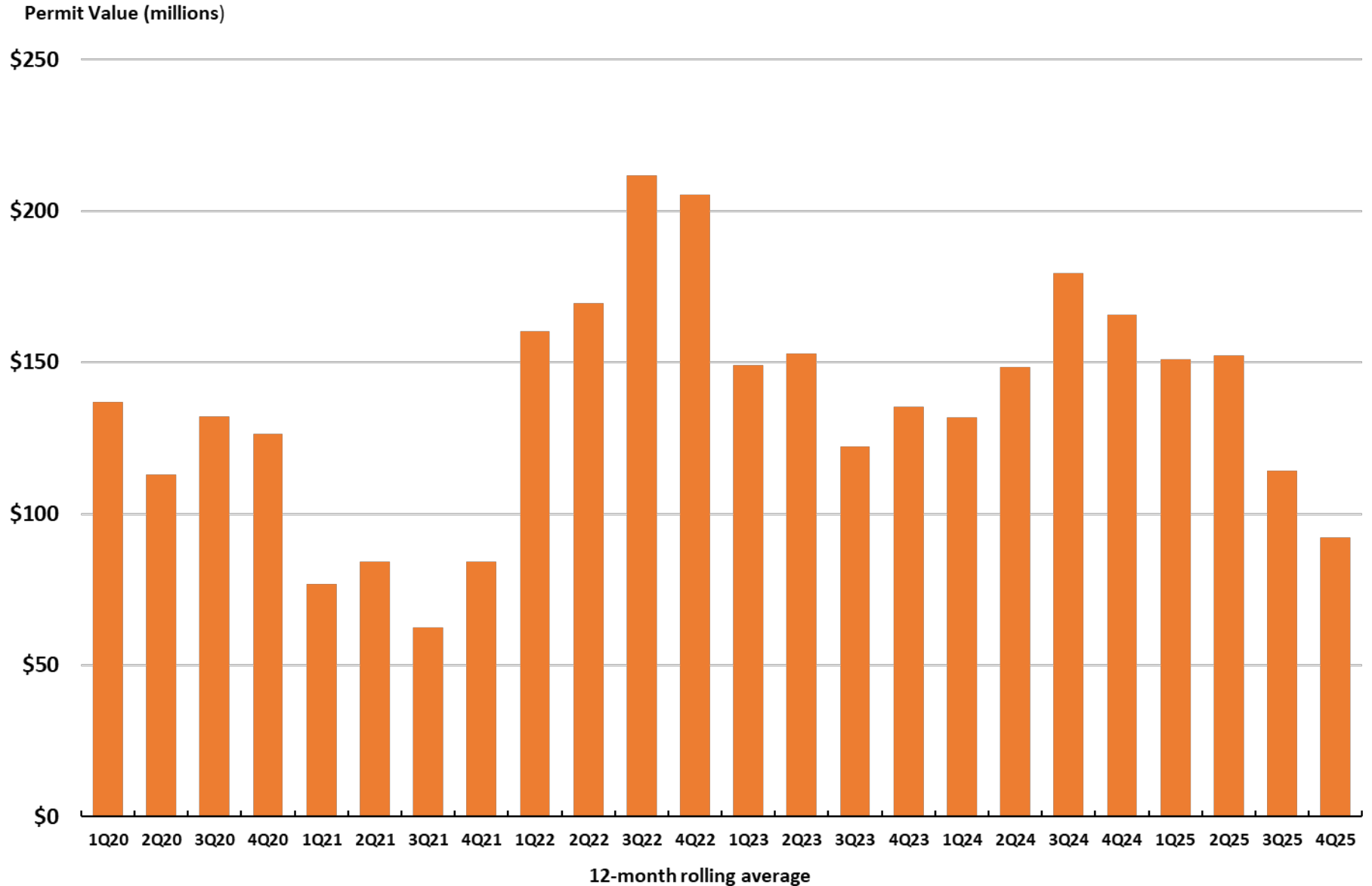
Volusia County Commercial New Construction Building Permits



| MUNICIPALITIES | 4Q 2024 Permits | 4Q 2024 \$ Value | 1Q 2025 Permits | 1Q 2025 \$ Value | 2Q 2025 Permits | 2Q 2025 \$ Value | 3Q 2025 Permits | 3Q 2025 \$ Value | 4Q 2025 Permits | 4Q 2025 \$ Value |
|---------------------------|-----------------|----------------------|-----------------|---------------------|-----------------|----------------------|-----------------|---------------------|-----------------|---------------------|
| Daytona Beach | 8 | \$57,218,737 | 10 | \$20,017,467 | 32 | \$99,416,085 | 3 | \$2,063,200 | 21 | \$16,391,460 |
| Daytona Beach Shores | 0 | \$0 | 0 | \$0 | 0 | \$0 | 0 | \$0 | 0 | \$0 |
| DeBary | 2 | \$3,535,438 | 0 | \$0 | 0 | \$0 | 0 | \$0 | 0 | \$0 |
| DeLand | 19 | \$46,803,407 | 45 | \$8,039,731 | 29 | \$20,728,952 | 1 | \$400,000 | 0 | \$0 |
| Deltona | 0 | \$0 | 3 | \$8,683,598 | 3 | \$3,131,232 | 0 | \$0 | 0 | \$0 |
| Edgewater | 1 | \$1,825,000 | 0 | \$0 | 2 | \$8,180,000 | 9 | \$22,116,996 | 1 | \$1,235,253 |
| Holly Hill | 2 | \$12,627,274 | 0 | \$0 | 0 | \$0 | 1 | \$70,000 | 4 | \$8,898,624 |
| Lake Helen | 0 | \$0 | 0 | \$0 | 0 | \$0 | 0 | \$0 | 0 | \$0 |
| New Smyrna Beach | 0 | \$0 | 24 | \$23,309,102 | 30 | \$20,888,417 | 1 | \$755,726 | 5 | \$6,135,792 |
| Oak Hill | 0 | \$0 | 0 | \$0 | 0 | \$0 | 0 | \$0 | 0 | \$0 |
| Orange City | 0 | \$0 | 4 | \$2,287,747 | 1 | \$293,000 | 0 | \$0 | 2 | \$19,689,800 |
| Ormond Beach | 0 | \$0 | 3 | \$1,826,662 | 5 | \$18,615,680 | 1 | \$5,000,000 | 2 | \$615,000 |
| Pierson | 0 | \$0 | 0 | \$0 | 0 | \$0 | 0 | \$0 | 0 | \$0 |
| Ponce Inlet | 0 | \$0 | 0 | \$0 | 0 | \$0 | 0 | \$0 | 0 | \$0 |
| Port Orange | 4 | \$6,980,639 | 0 | \$0 | 7 | \$16,070,010 | 3 | \$8,612,620 | 0 | \$0 |
| South Daytona | 0 | \$0 | 1 | \$850,000 | 1 | \$1,600,000 | 1 | \$1,600,000 | 0 | \$0 |
| Unincorporated | 7 | \$22,809,864 | 1 | \$475,000 | 2 | \$4,321,938 | 2 | \$6,250,000 | 1 | \$9,907,363 |
| Totals for Quarter | 43 | \$151,800,359 | 91 | \$65,489,308 | 112 | \$193,245,315 | 22 | \$46,868,542 | 36 | \$62,873,292 |

Source: City and County permit offices reporting new construction activity.

Volusia County Commercial New Construction Building Permit 5-Year Trend

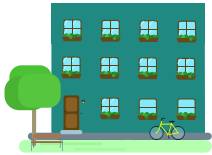


Source: City and County permit offices reporting new construction activity.

2021-2025 New Commercial Construction Investment

Multi-Family Housing

\$938.4M



Storage/ Retail/
Other Services

\$424.9M



Warehousing &
Logistics

\$302.8M



Healthcare

\$279.9M



Municipal

\$133.1M



Education

\$121.9M



Leisure & Hospitality

\$111.6M



Manufacturing

\$38.7M



Aviation & Aerospace

\$12.6M



Construction & Utilities

\$4.2M



Business & Professional

\$2.1M

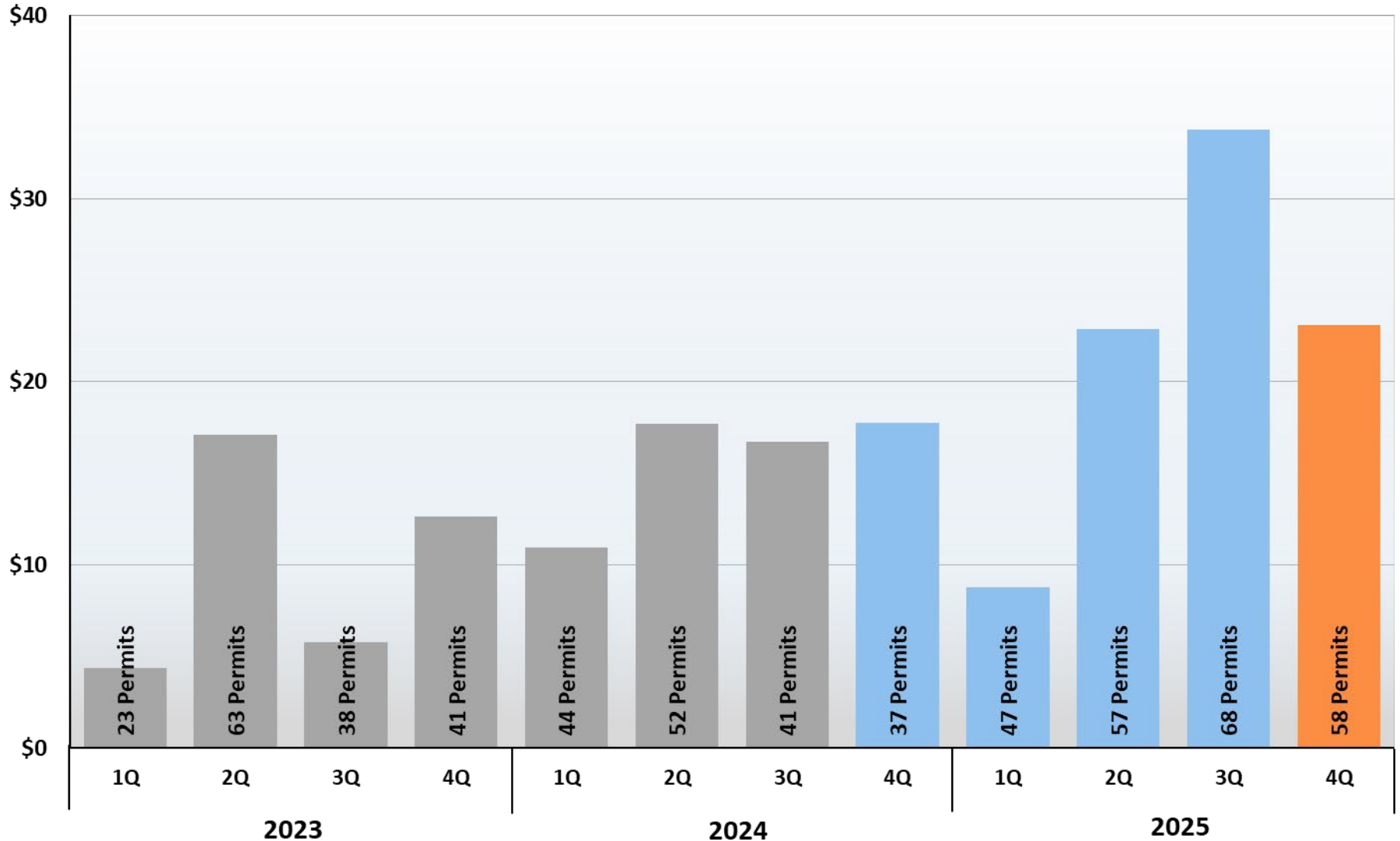


Note: Sector totals reflect new commercial construction permits with values of \$1 million or higher.

Source: City and County permit offices reporting new construction activity.

Volusia County Commercial Redevelopment Permits

Permit Value (millions)



Note: Only redevelopment permits valued at \$10,000 or higher are shown.

Source: City and County permit offices reporting redevelopment activity.

Volusia County Commercial Redevelopment Permits



| MUNICIPALITIES | 4Q 2024 Permits | 4Q 2024 \$ Value | 1Q 2025 Permits | 1Q 2025 \$ Value | 2Q 2025 Permits | 2Q 2025 \$ Value | 3Q 2025 Permits | 3Q 2025 \$ Value | 4Q 2025 Permits | 4Q 2025 \$ Value |
|---------------------------|-----------------|---------------------|-----------------|--------------------|-----------------|---------------------|-----------------|---------------------|-----------------|---------------------|
| Daytona Beach | 3 | \$1,010,500 | 8 | \$2,340,779 | 4 | \$2,886,175 | 5 | \$632,473 | 7 | \$4,134,998 |
| Daytona Beach Shores | 0 | \$0 | 0 | \$0 | 1 | \$196,000 | 2 | \$168,800 | 0 | \$0 |
| DeBary | 0 | \$0 | 0 | \$0 | 0 | \$0 | 0 | \$0 | 0 | \$0 |
| DeLand | 18 | \$11,274,684 | 11 | \$3,484,358 | 24 | \$10,907,956 | 17 | \$8,983,917 | 11 | \$4,603,517 |
| Deltona | 0 | \$0 | 0 | \$0 | 0 | \$0 | 0 | \$0 | 0 | \$0 |
| Edgewater | 0 | \$0 | 0 | \$0 | 0 | \$0 | 0 | \$0 | 0 | \$0 |
| Holly Hill | 1 | \$28,000 | 4 | \$327,000 | 0 | \$0 | 1 | \$4,750,000 | 4 | \$183,500 |
| Lake Helen | 0 | \$0 | 0 | \$0 | 0 | \$0 | 0 | \$0 | 0 | \$0 |
| New Smyrna Beach | 10 | \$2,694,765 | 15 | \$1,952,711 | 14 | \$2,795,520 | 18 | \$4,165,267 | 20 | \$7,197,669 |
| Oak Hill | 0 | \$0 | 0 | \$0 | 0 | \$0 | 0 | \$0 | 0 | \$0 |
| Orange City | 0 | \$0 | 0 | \$0 | 0 | \$0 | 8 | \$2,451,787 | 7 | \$4,831,090 |
| Ormond Beach | 5 | \$2,754,300 | 7 | \$504,529 | 13 | \$5,803,040 | 16 | \$12,418,204 | 9 | \$2,131,128 |
| Pierson | 0 | \$0 | 0 | \$0 | 1 | \$267,597 | 0 | \$0 | 0 | \$0 |
| Ponce Inlet | 0 | \$0 | 0 | \$0 | 0 | \$0 | 0 | \$0 | 0 | \$0 |
| Port Orange | 0 | \$0 | 0 | \$0 | 0 | \$0 | 0 | \$0 | 0 | \$0 |
| South Daytona | 0 | \$0 | 0 | \$0 | 0 | \$0 | 0 | \$0 | 0 | \$0 |
| Unincorporated | 0 | \$0 | 2 | \$166,173 | 0 | \$0 | 1 | \$198,951 | 0 | \$0 |
| Totals for Quarter | 37 | \$17,762,249 | 47 | \$8,775,550 | 57 | \$22,856,288 | 68 | \$33,769,399 | 58 | \$23,081,902 |

Note: Only redevelopment permits valued at \$10,000 or higher are shown.
 Source: City and County permit offices reporting redevelopment activity.

2021-2025 Commercial Redevelopment Investment

Storage/ Retail/Other Services

\$88.2M



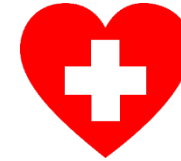
Leisure & Hospitality

\$63.2M



Healthcare

\$58.6M



Education

\$27.0M



Municipal

\$25.4M



Multi-Family Housing

\$19.3M



Manufacturing

\$15.9M



Business & Professional

\$7.0M



Aviation & Aerospace

\$1.2M



Construction

\$1.0M



Note: Sector totals reflect new commercial construction permits with values of \$1 million or higher.

Source: City and County permit offices reporting new construction activity.

VOLUSIA COUNTY ECONOMIC DEVELOPMENT



It's our business to help your business grow.

Volusia County Economic Development is a free resource available to businesses in Volusia County needing assistance with business planning in the areas of:

- Top line revenue growth
- Hiring and training
- Financing/loan opportunities
- Product/facility improvements
- Supply chain issues

The Division specializes in assisting manufacturing and knowledge-based companies with high growth potential that require capital investment (i.e. corporate headquarters, research and development facilities, etc.) and are in targeted industries such as aviation and aerospace, clean tech, financial/professional services, homeland security/defense, infotech, and life sciences.

The division is a partner with Volusia County's municipalities, educational institutions, chambers of commerce, and economic development stakeholders to promote the growth of new jobs in their communities.

Call our office or visit our website **FloridaBusiness.org** for detailed information about available services.

Report published quarterly by Volusia County Division of Economic Development
Daytona Beach International Airport, 700 Catalina Drive, Suite 200, Daytona Beach, FL 32114
phone: 386.248.8048 or 800.554.3801
FloridaBusiness.org

